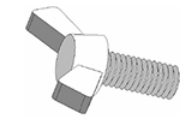
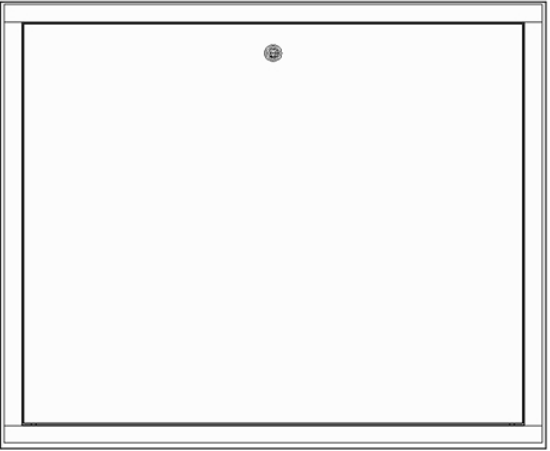
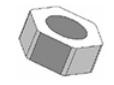


N°	Denominazione	Finitura	Colore	N°pezzi
1	FONDO	ZINCATO		1
2	PORTA	VERNICIATO	RAL9010	1
3	TELAIO	VERNICIATO	RAL9010	1
4	BINARIO PER CANALINA	ZINCATO		2
5	CANALINA MOBILE	ZINCATO		2
6	PERNO ALETTATO M6X20	ZINCATO		8
7	INSERTO M6	ZINCATO		8
8	SERRATURA A CACCIAVITE	CROMATO		1
9	RETE METALLICA	ZINCATO		1
10	VITE TE M8X20	ZINCATO		8
11	DADO M8	ZINCATO		8
12	RONDELLA D6	ZINCATO		4
13	RONDELLA GR. 8X24	ZINCATO		4



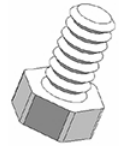
Perno alettato
M6x20



Dado M8



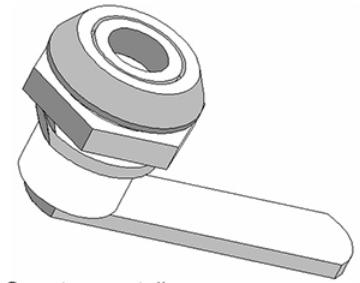
Rondella
Grembiulina
8x24



Vite M8x20



Rondella D.8



Serratura metallo
A cacciavite

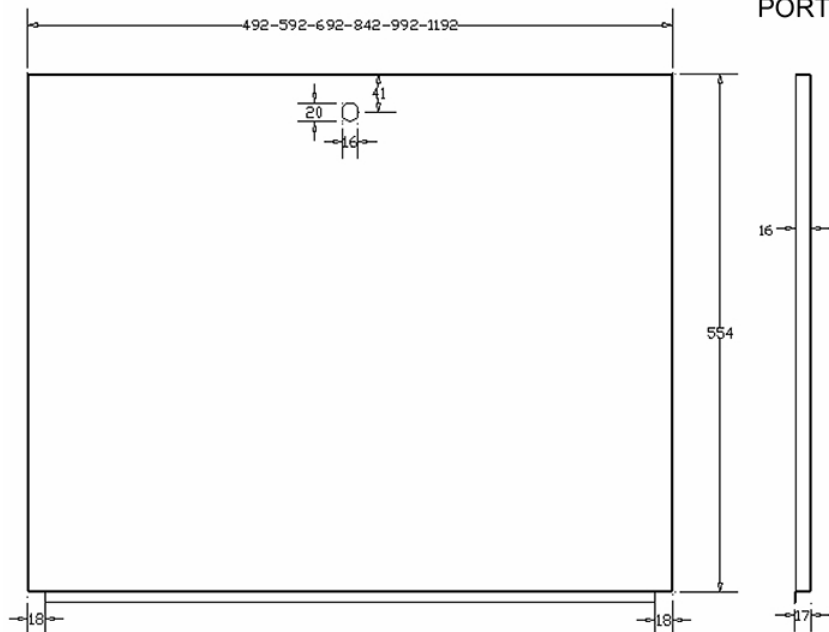
Descrizione: **CASSETTA SENZA PIEDINO**



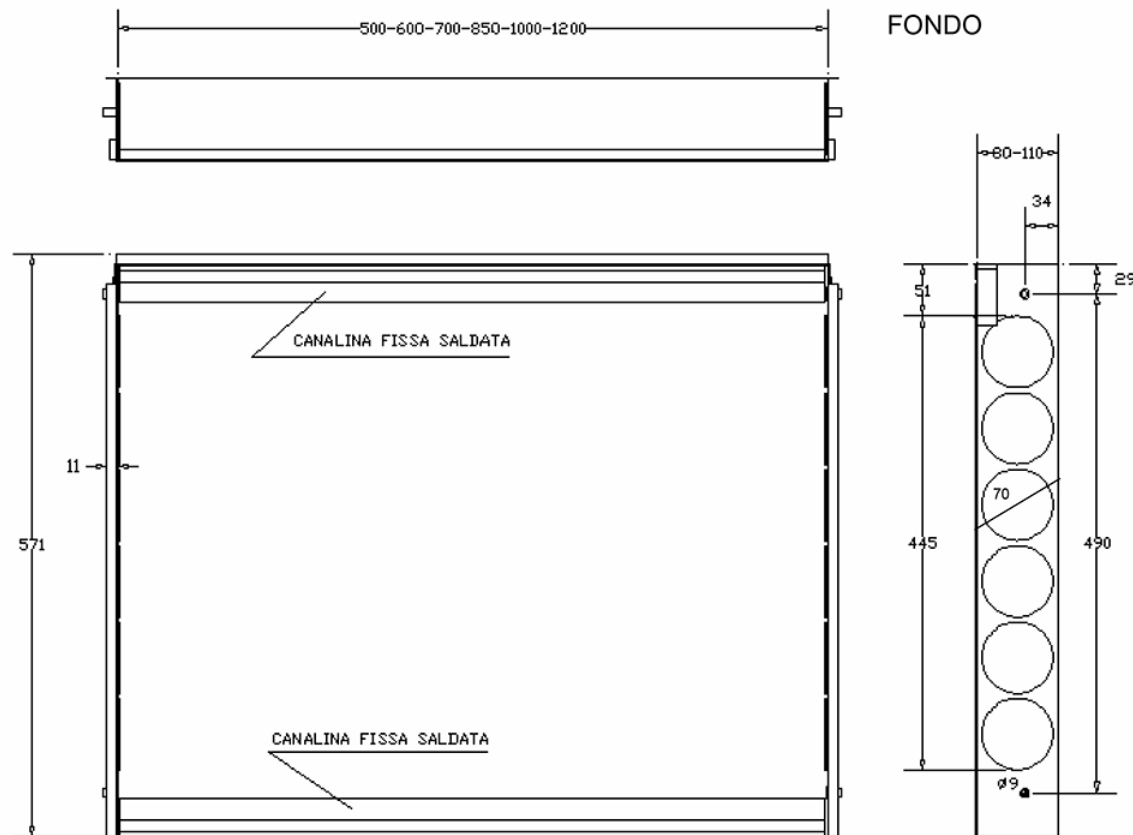
Geferplast srl
 Stabilimento: C/da Cese Nove snc
 San Salvatore Telesino (BN)
 Tel. E Fax 0824947069 r.a.
 Web-site www.gwfwrplast.com

Disegno N°
CT01E

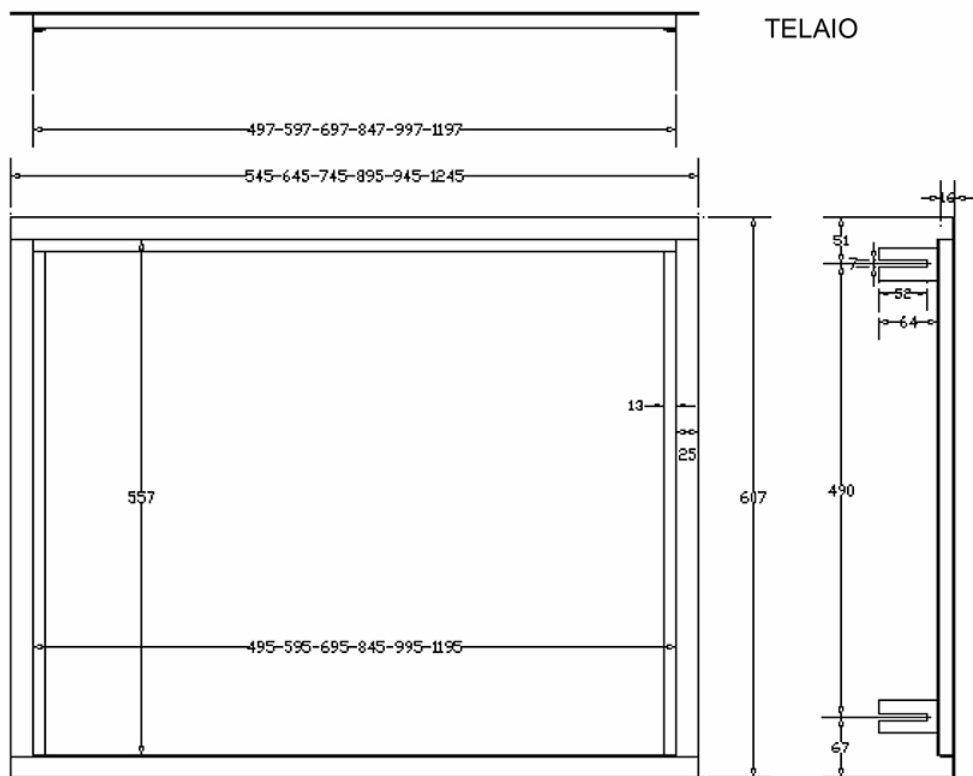
PORTA



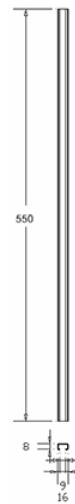
FONDO



TELAIO



CANALINA MOBILE



Descrizione: CASSETTA SENZA PIEDINO

Geferplast srl

Geferplast srl
 Stabilimento: C/da Cese Nove snc
 San Salvatore Telesino (BN)
 Tel. E Fax 0824947069 r.a.
 Web-site www.gfwrplast.com

Disegno N°
 CT01T